



A warm welcome awaits you at

Leisureplex
HOLIDAY HOTELS

Explore our
Self Drive
Hotel Breaks 2025

January - December 2025

3 NIGHTS
FROM
£189
PER PERSON

Ventnor, 
Isle of Wight

01257 248042



alfatravel.co.uk

Explore the best of the British Seaside

Hello, and a warm welcome to our 2025 Self Drive Hotel Breaks Brochure.

Alfa Travel are part of the Alfa Leisureplex Group, who are proud to be the UK's only Employee Owned Travel Group. Together with our very own chain of Leisureplex Hotels, we have a fantastic collection of unbeatable value for money Self Drive Hotel Break packages.

Our Self Drive Breaks are full of choice, offering a variety of durations to choose from as well as a fabulous selection of locations to explore throughout the UK.

You can make your own way to the hotel, explore the resort at your leisure, yet still be reassured you will receive the quality accommodation and premium service that comes with every Alfa Travel holiday.

Whether you have stayed with us before or are looking to holiday with us for the first time, we look forward to welcoming you to one of our Leisureplex Hotels and thank you for your continued support.

**Best Wishes,
The Alfa Travel Team**



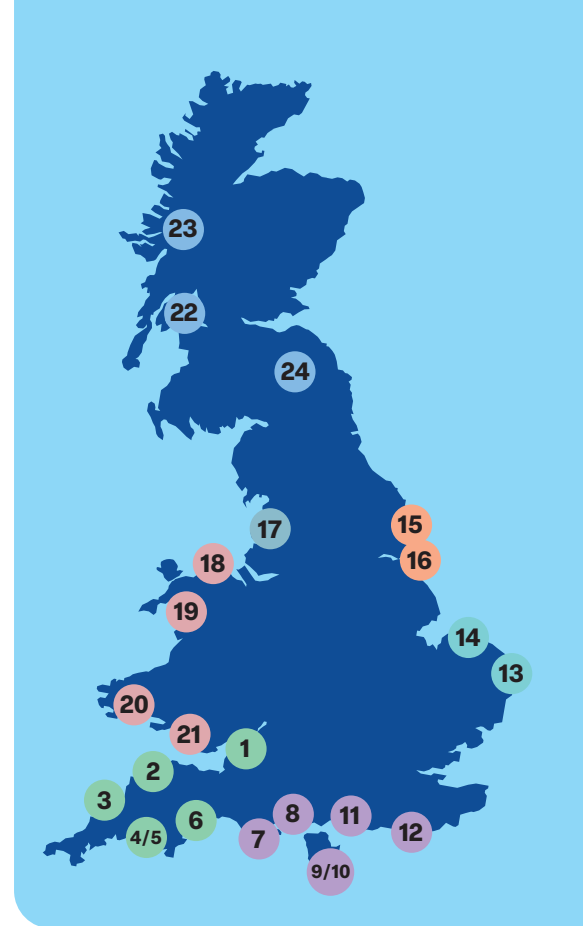
Alfa Travel includes

- ✓ Choice of 24 Leisureplex Holiday Hotels
- ✓ Choice of duration
- ✓ Full British Breakfast
- ✓ Three course evening meal
- ✓ En-suite rooms
- ✓ Wi-Fi
- ✓ Entertainment every evening in Spring, Autumn, festive periods and most evenings in Summer
- ✓ Isle of Wight and Dunoon holidays include ferry tickets in the holiday cost
- ✓ Celebration packs available at all Leisureplex Hotels

Contact our reservations team on **01257 248042** or email **reservations@alfatravel.co.uk** to add a celebration pack to your booking.

Contents

South West England	8
1 Weston-super-Mare - Anchor Head Hotel	9
2 Ilfracombe - Imperial Hotel	10
3 Newquay - Eliot Hotel	11
4 Torquay - Metropole Hotel	12
5 Torquay - Regina Hotel	13
6 Exmouth - Cavendish Hotel	14
South & South East England	15
7 Weymouth - Royal Hotel	16
8 Bournemouth - Norfolk Royale Hotel	17
9 Shanklin - Shanklin Hotel	18
10 Sandown - Bayshore Hotel	19
11 Bognor Regis - Royal Norfolk Hotel	20
12 Eastbourne - Queens Hotel	21
East Coast England	22
13 Great Yarmouth - New Beach Hotel	23
14 Cromer - Hotel De Paris	24
Yorkshire	25
15 Scarborough - Cumberland Hotel	26
16 Bridlington - Monarch Hotel	27
North West England	28
17 Blackpool - Queens Hotel	29
Wales	30
18 Llandudno - Hydro Hotel	31
19 Criccieth - George IV Hotel	32
20 Tenby - Cliffe Norton Hotel	33
21 Porthcawl - Seabank Hotel	34
Scotland	35
22 Dunoon - Selborne Hotel	36
23 Fort William - Croit Anna Hotel	37
24 Melrose - Waverley Castle Hotel	38
Holiday Supplements	39
Join a coach holiday at the hotel	39



Hotel icon key:

- Lifts
- Wi-Fi
- Entertainment
- Swimming Pool
- Tea & Coffee

Financial Security Statement

Alfa Travel are members of the Bonded Coach Holiday Group, overseen by The Association of Bonded Travel Organisers Trust Limited. This is a government approved consumer protection scheme. This ensures that in relation to the holidays described in this brochure (or website) that a Bond, which may be called upon in the unlikely event of the members Insolvency, protects the clients' monies.

Clients are recommended to inspect the current membership certificate at our registered office or alternatively go to www.bch-uk.org or telephone 0207 7065 5316 to confirm current membership.

For full terms and conditions please visit our website at alfatravel.co.uk or request a copy of our Alfa Travel Coach Holiday brochures.



We are so much more than just a hotel group

We want to help create lasting memories in your home away from home. That is why we place our guests at the heart of what we do. From a warm welcome on arrival, to the very last minute of your stay, our friendly teams will be on hand to make sure your stay is one to remember.

Our strong traditional values are reflected in everything from hearty restaurant meals to our warm and friendly service.

When you arrive at your resort, you will find our hotels in great locations. They are the perfect base from which to explore the local area. Whichever Leisureplex Hotel you choose, you can relax safe in the knowledge that you will receive the quality accommodation and premium service that comes with every Alfa Travel holiday!



 Royal Norfolk Hotel



 Imperial Hotel

Welcoming Lounges and Cosy Bars

All of our hotels are large enough to provide both cosy relaxing lounge areas where you can enjoy a tranquil glass of wine or curl up with a book. Many boast panoramic sea or loch views, where you can sit, relax and watch the world go by.



Evening Entertainment

Our Leisureplex Hotels include entertainment most evenings in summer. In spring, October and throughout our festive programme you will find entertainment to enjoy every evening. You'll find live singers, musicians, comedians and dance floors where you can dance the night away. For bingo lovers, you will also find regular games of bingo, with cash prizes up for grabs.



Example of a Superior Room

Superior Rooms at Leisureplex Hotels

Are you celebrating a special occasion, or looking for that something extra special whilst you are away? If so, why not treat yourself to a superior room? You will find modern furnishings in these larger rooms, which come equipped with a mini fridge, large smart TV, luxury hot drink selection, toiletries, iron and ironing board, in-room safe and alarm clock. Available to book for double and twin rooms in selected resorts, they offer the perfect setting for you to enjoy an extra special stay.

Cosy Doubles for Solo Travellers!

Are you a solo traveller who enjoys the luxury of a slightly larger room with a double bed? There are a number of cosy double rooms, exclusively for solo travellers available at selected Leisureplex Hotels. Smaller than our standard double rooms, cosy doubles are perfect for those who like a little extra space to relax and unwind. Cosy double rooms are available at selected Leisureplex Hotels for just £15 extra per night.

Comfortable Relaxing Bedrooms

We've thought of everything you need to have a great holiday! Our en-suite bedrooms come with comfy beds for a great nights sleep, tea and coffee making facilities, flatscreen TV with freeview and radio, hairdryer and free Wi-Fi throughout the hotels so you can stay connected. You'll find a comfortable seating area and with many of our bedrooms featuring stunning sea views, you can relax and watch the waves roll in from the comfort of your room. And if you need toiletries or an iron, just ask our friendly reception teams who will be happy to help!



Hearty, Home Cooked Food

During your stay, you can enjoy our home cooked food, prepared for you every day by our Chefs and their teams.

Start your day off the right way, with our hearty breakfasts, including cereals, fruit and yoghurts, followed by a traditional full cooked breakfast and a selection of other hot choices. Take your pick from freshly cooked bacon, fluffy hash browns, succulent sausages, eggs cooked the way you like them and more. All served with tea, coffee and toast.

For dinner, we offer a varied three course menu, with a selection of tasty starters, main courses and desserts, including daily vegetarian and vegan meals. We can also cater for many dietary requirements; just let us know when you book your holiday.

For days out, we also offer great value picnic lunches for you to enjoy on your travels, just ask your reception team.



Example Leisureplex Menus

We are proudly employee owned

Did you know that our business is majority owned and operated by our employees? This means that all of our employees benefit from the success of the business through an annual tax free dividend. It also means that our employees have a voice in shaping the future of our business for the benefit of our customers and employee owners alike. All of our employees are co-owners of our business, from the team in the call centre, to our Alfa coach drivers, luggage handlers at the interchange and the teams in our Leisureplex Hotels!

We are proud to be a Trustee Member of the Employee Ownership Association, who represent the employee owned sector in the UK. Their independent research shows that the employees of employee owned businesses are more engaged, productive and successful and in turn we know that this provides you with the very best holiday experience!



Proudly employee owned.



No Single Room Supplements

In 2025 there will be no single supplements for standard single rooms on any of our holidays. This means that in 2025, we have over 21,000 holidays for solo travellers available with no single supplement.

The demand for these rooms is extremely high, so early booking is recommended!



Amazing Spring Offers

Leisureplex
HOLIDAY HOTELS



Free Drink Every Evening

Have a drink on us! Enjoy a complimentary glass of wine, beer or a soft drink with dinner every evening until the end of April, on all Spring Holidays staying at a Leisureplex Hotel.



Entertainment Every Evening

When you stay in a Leisureplex Hotel, you will find entertainment every evening on our Spring Breaks until the end of April.



Half Price Bar

Book a Spring Break and take advantage of our fantastic half price bar offer on selected drinks every evening up to the end of April. Available on Spring Breaks staying in Blackpool, Torquay (Metropole), Great Yarmouth, Ilfracombe, Newquay, Porthcawl, Sandown, Fort William*, Dunoon* or Melrose*.

*Terms and conditions:

Half price bar runs for more than 72 hours in accordance with Scottish Laws.

Explore the South West

Stunning landscapes that melt together with rolling hills and postcard-shot beaches, the largest of all regions in England often feels pleasantly off the beaten track. In this part of the country you can discover endless Areas of Outstanding Natural Beauty, cream teas, fruity cider and crumbly cheeses.

Visit alfatravel.co.uk for further details



Torquay



Leisureplex Hotels in this area

- 1 Anchor Head - Weston-super-Mare 9
- 2 Imperial Hotel - Ilfracombe 10
- 3 Eliot Hotel - Newquay 11
- 4 Metropole Hotel - Torquay 12
- 5 Regina Hotel - Torquay 13
- 6 Cavendish Hotel - Exmouth 14



Cosy Double Rooms – See page 5 for details

Anchor Head Hotel
Weston-super-Mare, Somerset

☎ 01934 620880
✉ anchor@leisureplex.co.uk
📍 Claremont Crescent, Weston-super-Mare, Somerset, BS23 2ED

Leisureplex HOLIDAY HOTELS



4 NIGHTS
FROM
£219
PER PERSON

Weston-super-Mare, Somerset's best known holiday resort, is situated in a sheltered bay at the foot of the Mendip Hills with views across the Bristol Channel to South Wales. There are many Victorian and Edwardian terraces interspersed with colourful parks and gardens. Attractions include the magnificent Grand Pier, dancing in the famous Winter Gardens and top class cabaret and big star names performing at the Playhouse theatre.

Situated by Birnbeck Pier, close to the boating slipway and beach, with spectacular sea views across the channel from our lounge, restaurant and from many of the hotel's bedrooms. The hotel features a restaurant, a quiet lounge, bar with dance floor and entertainment on most evenings. The hotel also boasts an outdoor terrace, perfect for catching the sun and enjoying spectacular sea views across the resort.

Weston is close to the historic cities of Bath and Bristol and the resort's position means they are perfect for a day trip with lovely scenery en-route.

Additional Information

- ✓ Ground floor rooms available
- ✓ Free on street car parking
- ✓ Room with a view available
- ✓ Free Wi-Fi throughout
- ✓ Lift serves all floors

Nearby

- ✓ Cheddar Gorge
- ✓ Bath, Minehead & Wells
- ✓ The Italian Gardens
- ✓ Helicopter Museum
- ✓ Bristol, Taunton & Street
- ✓ West Somerset Railway

3 Nights		4 Nights		6 Nights		7 Nights		10 Nights	
Tour 4100SD		Tour 5100SD		Tour 102SD		Tour 100SD		Tour 1100SD	
Nov 7, 21	£219	Feb 3, 10, 17, 24	£219	Mar 2, 16	£305	Apr 5, 6	£345	Dec 23	£999
Dec 27	£255	Mar 10, 24	£235	Apr 5, 6	£315	Apr 19, 20	£379		
Dec 30	£339	Mar 31 - Apr 19	£249	Apr 13 - Apr 20	£335	May 3, 4	£375		
		Apr 23 - May 7	£269	Apr 27 - May 11	£345	May 17 - Jun 29	£439		
		May 17 - Aug 23	£299	May 17, 18	£365	Jul 12 - Aug 16	£439		
		Aug 27 - Sep 24	£289	May 25 - Aug 24	£385	Aug 23, 24	£409		
		Oct 4 - Oct 27	£259	Aug 31 - Sep 14	£359	Sep 6, 7	£409		
		Nov 3 - Nov 24	£269	Sep 20 - Sep 28	£339	Sep 20 - Sep 21	£389		
		Dec 1	£269	Oct 4 - Oct 19	£339	Oct 4 - Oct 19	£389		
		Dec 23	£459	Dec 27	£589	Dec 23	£675		



Cosy Double Rooms
See page 5 for details

Half Price Bar
See page 7 for details

Imperial Hotel

Ilfracombe, Devon

☎ 01271 862536

✉ imperial@leisureplex.co.uk

📍 Wilder Road, Ilfracombe, Devon, EX34 9AL

Leisureplex **Alpha** **★★★★** 📶 🎵 🍷 🛎

4 NIGHTS
FROM
£219
PER PERSON

Ilfracombe is the premier resort in North Devon, situated between the breathtaking scenery of Exmoor to the east and the spectacular beaches of Croyde and Woolacombe to the west. For the energetic there are splendid walks along the Coastal Path, the famous Torrs walks or swimming from the Tunnel beaches and coves. For those who prefer to take things a little bit easier, you can simply stroll through the delightful gardens or watch the ever-changing harbour scene. A boat trip is a “must” during your stay to see the spectacular cliffs of North Devon or visit the magical Lundy Island.

In one of the best positions in Ilfracombe, overlooking Wildersmouth beach and the Landmark Theatre, the hotel is just a short stroll away from the high street and harbour. The hotel features a large restaurant and bar and entertainment room with dance floor, where you will find entertainment most evenings. You will also find fantastic sea views from many of the hotel's bedrooms.

Additional Information

- ✓ Limited free hotel parking, public car parks available nearby
- ✓ Room with a view available
- ✓ Free Wi-Fi throughout
- ✓ Lift to all floors (steps to some rooms on split level floors)

Nearby

- ✓ Lynton & Lynmouth
- ✓ South Molton, Bideford & Wells
- ✓ Exmoor Steam Railway
- ✓ Lundy Island
- ✓ Barnstaple

3 Nights Tour 4110SD		4 Nights Tour 5110SD		6 Nights Tour 112SD		7 Nights Tour 110SD		10 Nights Tour 1110SD	
Dec 27	£255	Mar 10, 17, 24	£219	Mar 2	£289	Apr 12, 13	£335	Dec 23	£999
Dec 30	£339	Mar 31 - Apr 16	£249	Apr 6 - 20	£319	Apr 26, 27	£349		
		Apr 26 - May 14	£259	Apr 26, 27	£339	May 10, 11	£349		
		May 31 - Jun 28	£289	May 4 - May 19	£339	May 18, 25, 31	£389		
		Jul 2 - Jul 30	£289	May 25 - Jul 27	£359	Jun 1 - Jul 27	£389		
		Aug 9 - Aug 23	£289	Aug 3 - Aug 24	£359	Aug 9 - Aug 24	£389		
		Aug 27	£279	Aug 31	£349	Aug 31 - Sep 21	£379		
		Sep 6 - Sep 24	£279	Sep 6 - Sep 28	£349	Oct 4, 5	£369		
		Oct 4 - Nov 24	£259	Oct 4 - 19	£349	Oct 18, 19	£369		
		Dec 23	£459	Dec 27	£569	Dec 23	£669		



Cosy Double Rooms – See page 5 for details

Eliot Hotel

Newquay, Cornwall

☎ 01637 878177

✉ eliot@leisureplex.co.uk

📍 Edgcombe Avenue, Newquay, Cornwall, TR7 2NH

Leisureplex **Alpha** **★★★★** 📶 🎵 🍷 🛎

3 NIGHTS
FROM
£189
PER PERSON

Newquay is Cornwall's premier holiday resort boasting some of the finest coastline and beaches in Europe. The heart of the town is the old harbour; it spreads along the cliff tops which stand behind the eleven magnificent sandy beaches. Newquay offers wonderful cliff and beach walks, a picturesque harbour and the variety of activities you would expect from such a major resort. Along the coast from Newquay you will find many towns and villages which make perfect places to stop and take in the stunning scenery. Close to the magnificent Great Western and Tolcarne beaches with their crystal clear sparkling waters, the hotel is just a short stroll away from the seafront, resort's shopping area and harbour. The hotel features a comfortable lounge, games room, large restaurant and entertainment room with dance floor, where entertainment can be found most evenings. The hotel also boasts a relaxing outdoor area as well as an outdoor pool, open May-September.

Additional Information

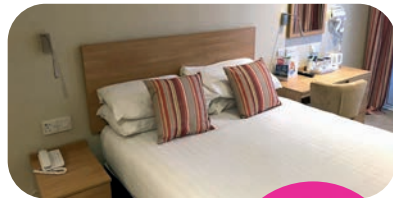
- ✓ Free hotel car parking available
- ✓ Free Wi-Fi throughout
- ✓ Lift to all floors (steps to some rooms on split level floors)

Nearby

- ✓ Eden Project
- ✓ Bodmin, Tintagel & St Ives
- ✓ Lost Gardens of Heligan
- ✓ Bodmin & Wenford Railway
- ✓ Padstow
- ✓ Land's End
- ✓ Penzance

3 Nights Tour 4130SD		4 Nights Tour 5130SD		6 Nights Tour 132SD		7 Nights Tour 130SD		10 Nights Tour 1130SD	
Feb 7	£189	Jan 27 - Feb 24	£209	Mar 2, 16, 23	£289	Feb 3, 7, 17	£299	Dec 23	£995
Feb 21	£189	Mar 10	£219	Mar 31	£289	Feb 21	£295		
Dec 27	£255	Mar 31 - Apr 16	£249	Apr 6	£319	Apr 5, 12, 13	£335		
Dec 30	£339	May 3, 7	£259	Apr 20	£349	May 3, 4, 11	£359		
		May 24 - Jun 4	£289	Apr 27	£349	May 17 - May 31	£425		
		Sep 6, 10	£279	May 11	£349	Jun 1 - Jun 29	£425		
		Oct 4, 8, 18, 22	£269	May 18	£369	Jul 5 - Aug 24	£425		
		Oct 27 - Nov 24	£259	Jun 1	£369	Aug 30 - Sep 21	£389		
		Dec 1	£259	Oct 12	£339	Sep 27 - Oct 19	£365		
		Dec 23	£459	Dec 27	£549	Dec 23	£669		

Superior rooms
for that extra touch of luxury
See page 5 for details



Cosy Double Rooms
See page 5 for details

Half Price Bar
See page 7 for details

Metropole Hotel
Torquay, South Devon

☎ 01803 293682
✉ metropole@leisureplex.co.uk
📍 Belgrave Road, Torquay, South Devon, TQ2 5HN



4 NIGHTS
FROM
£209
PER PERSON

Torquay is one of Britain's most famous resorts, situated at the heart of 22 miles of unspoilt coastline known as the "English Riviera" because of its mild climate, sparkling blue waters, blue-flag beaches, attractive gardens and palm tree lined seafront. It offers variety, day and night, from its bustling harbour and marina to its exclusive shops, sophisticated restaurants and bars.

Torquay's spectacular modernised waterfront provides a continental atmosphere with its attractive cafés and shops, luxury yachts and beautiful footbridge across the inner harbour.

Situated in the heart of Torquay's hotel district, the Metropole hotel offers a great location to explore beautiful Torquay and the well-renowned English Riviera. The hotel features a restaurant, relaxing lounge and bar with dance floor, where you can find entertainment on most evenings. The hotel also boasts an outdoor seating area, perfect for soaking up the sun.

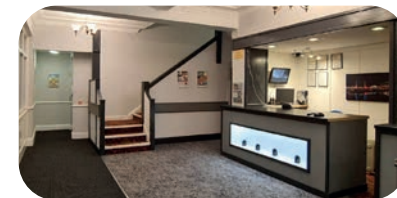
Additional Information

- ✓ Free hotel car parking available
- ✓ Ground floor rooms available
- ✓ Room with a view available
- ✓ Free Wi-Fi throughout
- ✓ Lift serves all floors

Nearby

- ✓ Exeter, Plymouth, Paignton & Teignmouth
- ✓ South Devon Railway
- ✓ Dartmoor National Park
- ✓ Kents Caverns
- ✓ Buckfast Abbey

3 Nights Tour 4151SD		4 Nights Tour 5151SD		6 Nights Tour 153SD		7 Nights Tour 151SD		10 Nights Tour 1151SD	
Dec 27	£255	Jan 27 - Feb 24	£209	Jan 27 - Feb 1	£269	Jan 27	£289	Dec 23	£1029
Dec 30	£359	Mar 10, 24	£235	Mar 2, 16	£305	Apr 12, 13	£365		
		Mar 31 - Apr 16	£249	Apr 6, 12, 13	£335	Apr 26, 27	£409		
		Apr 26 - May 14	£279	Apr 20 - May 11	£379	May 10, 11	£409		
		May 24 - Jun 25	£299	May 18 - Jun 29	£409	May 24 - Jun 22	£465		
		Jul 5 - Aug 20	£299	Jul 5 - Jul 27	£409	Jul 5 - Aug 17	£465		
		Aug 30 - Sep 17	£289	Aug 2 - Aug 17	£409	Aug 30 - Sep 14	£425		
		Sep 27 - Oct 27	£269	Aug 24 - Sep 7	£379	Sep 27, 28	£409		
		Nov 3 - Dec 8	£279	Sep 13 - Oct 19	£359	Oct 11, 12	£409		
		Dec 23	£469	Dec 27	£589	Dec 23	£699		



Cosy Double Rooms – See page 5 for details

Regina Hotel
Torquay, South Devon

☎ 01803 292904
✉ regina@leisureplex.co.uk
📍 Victoria Parade, Torquay, South Devon, TQ1 2BE



3 NIGHTS
FROM
£229
PER PERSON

Torquay is a seaside town located on the south coast of Devon. It is situated on the English Riviera, a stretch of coastline along the English Channel known for its warm climate, picturesque setting and beautiful beaches. The town is built around a natural harbour and surrounded by scenic hills. Torquay has something to offer everyone: by day you can relax on one of the clean sandy beaches, explore the bustling harbour and marina and the excellent shops or if you are feeling more active there are lovely walks, or activities such as sailing, bowls, golf or fishing.

By night you'll be spoilt for choice: there are theatres and cabarets and of course you'll see the lights illuminating the promenade reflected across the beautiful bay.

You can enjoy the spectacular views of the harbour from the hotel's bar and lounge and from many of the bedrooms. The hotel features a restaurant and bar with dance floor and entertainment most evenings.

Additional Information

- ✓ Public car park directly opposite the hotel
- ✓ Room with a view available
- ✓ Free Wi-Fi throughout
- ✓ Lift serves all floors

Nearby

- ✓ Exeter, Plymouth, Paignton & Teignmouth
- ✓ South Devon Railway
- ✓ Dartmoor National Park
- ✓ Kents Caverns
- ✓ Buckfast Abbey

3 Nights Tour 4150SD		4 Nights Tour 5150SD		6 Nights Tour 152SD		7 Nights Tour 150SD		10 Nights Tour 1150SD	
Nov 7	£229	Mar 10, 24	£235	Mar 2, 16	£299	May 3, 4	£409	Dec 23	£1029
Dec 27	£255	Mar 31	£249	Apr 6, 13	£329	May 17 - May 31	£465		
Dec 30	£359	May 3, 7, 17	£279	Apr 20, 27	£379	Jun 1 - Jun 29	£465		
		May 21 - Jun 28	£299	May 11	£379	Jul 12 - Jul 27	£465		
		Jul 2 - Jul 30	£299	May 25 - Jun 8	£409	Aug 9, 10	£465		
		Aug 9 - Aug 23	£299	Jul 6 - Jul 20	£409	Aug 23 - Sep 7	£425		
		Aug 27 - Sep 24	£289	Aug 3, 17	£409	Sep 20, 21	£409		
		Oct 4 - Nov 24	£279	Aug 31 - Sep 14	£379	Oct 4 - Oct 19	£409		
		Dec 1 - Dec 8	£279	Sep 28 - Oct 12	£359	Nov 3, 7	£409		
		Dec 23	£469	Dec 27	£589	Dec 23	£699		



 **Cosy Double Rooms** – See page 5 for details

Cavendish Hotel

Exmouth, Devon

☎ 01395 272528

✉ cavendish@leisureplex.co.uk

📍 11 Morton Crescent, Exmouth, Devon, EX8 1BE

Leisureplex       

4 NIGHTS
FROM
£219
PER PERSON

Exmouth offers a rich mixture of immaculate sands, lovely gardens, a busy marina and a wide range of sports facilities that combine to make it an excellent resort for all ages and interests. To the South the resort overlooks Lyme Bay, while to the West it looks across the estuary of the River Exe to the Haldon Hills and Dawlish Warren. There are boat trips aplenty but also lots to do on dry land with good shops, a museum, many old pubs and good walks at every turn. For the more active there is a public swimming pool, golf, and all forms of water sports including a sailing school.

Overlooking Exmouth's fine golden sands and expansive bay, the hotel is located on the seafront just a few minutes stroll from the shopping area. You will find spectacular views across the bay from many of the hotel's bedrooms. The hotel features a modern restaurant, bar lounge and entertainment room with dance floor, where you will find entertainment on most evenings.

Additional Information

- ✓ Ground floor rooms available
- ✓ Free hotel car parking available
- ✓ Room with a view available
- ✓ Free Wi-Fi throughout
- ✓ Lift serves most floors

Nearby

- ✓ Sidmouth
- ✓ Exeter
- ✓ Stuart Line Cruises
- ✓ Teignmouth & Dawlish
- ✓ South West Coastal Path
- ✓ Lyme Regis
- ✓ Torquay

3 Nights		4 Nights		6 Nights		7 Nights		10 Nights	
Tour 4155SD		Tour 5155SD		Tour 157SD		Tour 155SD		Tour 1155SD	
Mar 14	£219	Feb 17 - Feb 24	£219	Mar 2 - Mar 23	£319	Mar 10, 14	£315	Dec 23	£1029
Nov 7, 21	£219	Mar 3, 10, 17, 24	£235	Apr 5, 6, 13	£345	Apr 5 - Apr 20	£435		
Dec 27	£255	Mar 31 - Apr 19	£259	Apr 19 - May 11	£385	May 3 - May 11	£435		
Dec 30	£369	Apr 23 - May 7	£289	May 18 - Jun 29	£435	May 24 - Jun 29	£485		
		May 24 - Jun 25	£325	Jul 20	£435	Jul 5 - Jul 27	£485		
		Jul 5 - Aug 20	£325	Aug 3, 10	£435	Aug 3 - Aug 17	£485		
		Aug 30 - Sep 17	£315	Aug 24, Sep 7	£389	Aug 30, 31	£445		
		Sep 27 - Nov 24	£269	Sep 21 - Sep 28	£359	Sep 21 - Dec 1	£409		
		Dec 1	£269	Oct 5 - Oct 19	£359	Dec 23	£695		
		Dec 23	£479	Dec 27	£589				

Explore the South & South East

Visit the South of England for the chance to step back in time in medieval villages and quintessential coastal towns, or why not explore the myths and legends of smugglers along England's stunning South Coastline. Blending festivals, culture, history and breathtaking scenery, you'll never be short on things to do in the UK's sunniest region.

No Single Room Supplements

at Leisureplex Hotels in 2025



Leisureplex Hotels in this area

- | | | |
|----|------------------------------------|----|
| 7 | Royal Hotel - Weymouth | 16 |
| 8 | Norfolk Royale Hotel - Bournemouth | 17 |
| 9 | Shanklin Hotel - Shanklin | 18 |
| 10 | Bayshore Hotel - Sandown | 19 |
| 11 | Royal Norfolk Hotel - Bognor Regis | 20 |
| 12 | Queens Hotel - Eastbourne | 21 |

Superior rooms
for that extra touch of luxury
See page 5 for details



Cosy Double Rooms – See page 5 for details



Royal Hotel
Weymouth, Dorset

☎ 01305 782777

✉ royal@leisureplex.co.uk

📍 90-91 Esplanade, Weymouth,
DT4 7AX

Leisureplex HOLIDAY HOTELS

3 NIGHTS
FROM
£189
PER PERSON

Weymouth provides the perfect base for a holiday by the seafront. Voted as one of the top ten beach destinations in Europe, the Blue Flag winning Weymouth beach is the greatest reason to head to the south coast.

Why not explore the West Dorset Heritage Coast and Area of Outstanding Natural Beauty. Make sure you visit the infamous Nothe Fort, built by the Victorians to keep Portland harbour safe. It's a complex network of underground passages and offers phenomenal views over Weymouth Bay.

This elegant Grade II listed hotel is situated right on the seafront placing you at the heart of this classic seaside resort. The Royal Hotel is an impressive building of intricate architecture built in the Free Renaissance style and boasts fantastic views over the beach and bay. Only a short stroll to the shops, seaside attractions, the beautiful harbour and marina, the location couldn't be better for exploring all that Weymouth has to offer. There is everything you need nearby for an unforgettable stay by the seaside.

Additional Information

- ✓ Room with a view available
- ✓ Free Wi-Fi throughout
- ✓ Chargeable on-street parking
- ✓ Lift serves all floors

Nearby

- ✓ Jurassic Coast
- ✓ Dorchester
- ✓ Swanage Railway
- ✓ Lulworth Cove
- ✓ Subtropical Abbotsbury Garden
- ✓ Thomas Hardy Cottage
- ✓ Chesil Beach

3 Nights Tour 4161SD		4 Nights Tour 5161SD		6 Nights Tour 162SD		7 Nights Tour 160SD		10 Nights Tour 1160SD	
Feb 14	£189	Jan 27, Feb 3	£209	Mar 2, 17	£349	Feb 10	£325	Dec 23	£1109
Nov 28	£239	Feb 10, 17, 24	£235	Mar 23, 31	£359	Apr 12, 13	£385		
Dec 5	£239	Mar 10, 17	£259	Apr 6	£359	Apr 26 - May 11	£435		
Dec 27	£255	Mar 31 - Apr 16	£269	Apr 20 - May 4	£425	May 24 - Jun 22	£485		
Dec 30	£399	Apr 26 - May 14	£299	May 18 - Jun 29	£435	Jul 5 - Aug 17	£485		
		May 24 - Aug 20	£339	Jul 13, 27	£435	Aug 30 - Sep 14	£455		
		Aug 30 - Sep 17	£315	Aug 10	£455	Sep 27 - Oct 12	£389		
		Oct 1, 11, 15, 27	£269	Aug 24, Sep 7	£399	Nov 3 - Nov 28	£359		
		Nov 3 - Dec 15	£289	Sep 21 - Oct 5	£389	Dec 1, 5	£359		
		Dec 23	£499	Oct 19	£369	Dec 23	£729		
				Dec 27	£629				

Superior rooms
for that extra touch of luxury
See page 5 for details



Cosy Double Rooms – See page 5 for details



Norfolk Royale Hotel
Bournemouth, South East

☎ 01202 551521

✉ norfolkroyale@leisureplex.co.uk

📍 Richmond Hill, Bournemouth, South East,
BH2 6EN

Leisureplex HOLIDAY HOTELS

3 NIGHTS
FROM
£225
PER PERSON

Bournemouth is superbly situated on the sunny South coast on top of spectacular cliffs which look down upon miles of golden sand. The town is full of flowers and there are beautifully manicured parks and gardens, as well as a remarkable selection of shops. The delightful "chines", small valleys in the cliffs, offer shady groves leading to the shore. There are many outstanding attractions including museums, an art gallery, two piers and a wealth of evening entertainment ranging from classical music to top name summer shows. The elegant Norfolk Royale Hotel is centrally located just a few steps from Bournemouth Square and only a short stroll from award winning gardens and golden sand Blue Flag beaches. Offering a very high standard of accommodation, the Norfolk Royale Hotel is the perfect choice for seaside getaways and longer stays. The hotel has been restored to its Edwardian grandeur. Guests are able to enjoy the hotel's cosy lounge, bar or entertainment space with a dance floor. The hotel features an indoor pool.

Additional Information

- ✓ Free parking at the front and underground
- ✓ Indoor swimming pool
- ✓ Free Wi-Fi in public
- ✓ Lift serves all floors

Nearby

- ✓ Weymouth, Poole & Salisbury
- ✓ Wimborne Minster
- ✓ Stonehenge
- ✓ New Forest National Park
- ✓ Beaulieu National Motor Museum

3 Nights Tour 4170SD		4 Nights Tour 5170SD		6 Nights Tour 172SD		7 Nights Tour 170SD		10 Nights Tour 1170SD	
Feb 21	£225	Jan 27 - Feb 24	£255	Mar 16, 29	£339	Feb 17 - Mar 28	£329	Dec 23	£1119
Dec 27	£279	Mar 3, 10, 24	£275	Apr 5 - May 11	£415	Apr 5, 6	£389		
Dec 30	£415	Mar 31 - May 7	£299	May 18 - Jul 20	£459	Apr 19 - May 4	£449		
		May 17 - Jun 28	£355	Aug 10, 17, 24	£459	May 17, 18, 31	£505		
		Jul 2 - Jul 16	£355	Aug 31	£439	Jun 1 - Jun 29	£505		
		Aug 9 - Aug 23	£355	Sep 7, 14, 21	£439	Jul 5 - Jul 27	£505		
		Aug 27 - Sep 24	£345	Sep 28	£405	Aug 2 - Aug 24	£505		
		Oct 4 - Oct 27	£309	Oct 4 - Oct 19	£405	Oct 4 - Sep 21	£475		
		Nov 3 - Dec 15	£299	Nov 17, 24	£405	Oct 4 - Nov 28	£439		
		Dec 23	£515	Dec 27	£619	Dec 23	£749		



Shanklin Hotel

Isle of Wight, Shanklin

☎ 01983 862286
✉ shanklin@leisureplex.co.uk
📍 Clarendon Road, Shanklin, Isle of Wight, PO37 6DP

Leisureplex HOLIDAY HOTELS Alfa **★★★★** 📶 📺 🚰 🚿 🛏

4 NIGHTS
FROM
£249
PER PERSON

Shanklin boasts a long, safe sandy beach which lies at the foot of the spectacular cliffs on which most of the town is situated. The two are connected by a cliff lift. The traditional seaside part of town blends into the picturesque thatched cottages of Shanklin Old Town at the head of the impressive Shanklin Chine. The delightful nature trail through the Chine is not to be missed and includes a surprising relic of the Second World War - a section of PLUTO, the Pipe Line Under The Ocean. Gardens in Shanklin are a delight to visit. Take a stroll in the Big Mead, adjacent to historic St. Blasius Church, or along the spectacular coastal paths to Sandown or Bonchurch.

Situated in Shanklin Town, the Shanklin Hotel is one of the best known hotels on the island, with superb views across the resort from its restaurant and many bedrooms. Facilities include a splendid bar and indoor swimming pool. In the hotel's spectacular Starlight restaurant, you will find a dance floor and entertainment to enjoy on most evenings.

Additional Information

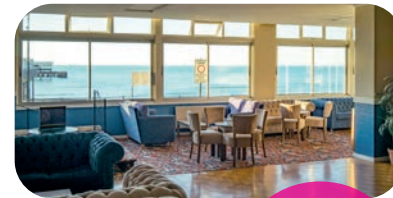
- ✓ Beach lift nearby
- ✓ Free hotel car parking available
- ✓ Indoor swimming pool
- ✓ Room with a view available
- ✓ Free Wi-Fi throughout
- ✓ Lift serves most rooms

Nearby

- ✓ Shanklin Chine
- ✓ Sandown
- ✓ Isle of Wight Steam Railway
- ✓ Ventnor Botanic Garden
- ✓ Old Shanklin Village
- ✓ Osborne House

3 Nights Tour 4200SD		4 Nights Tour 5200SD		6 Nights Tour 202SD		7 Nights Tour 200SD		10 Nights Tour 1200SD	
Dec 27	£259	Feb 17, 24	£249	Mar 23	£349	Apr 12 - May 10	£425	Dec 23	£1049
Dec 30	£369	Mar 3, 10	£259	Apr 6	£335	May 17 - May 31	£479		
		Mar 17	£295	Apr 20, 27	£389	Jun 7 - Jun 29	£479		
		Mar 31	£315	May 4, 11	£389	Jul 5 - Jul 20	£479		
		Apr 12, 16	£279	Jun 1 - Jun 29	£435	* Jul 12, 19, 26	£549		
		May 17 - Aug 20	£335	Jul 13, 27	£469	Aug 3, 17	£479		
		* Jul 19, Aug 2, 16	£369	Aug 10, 24	£469	* Aug 2, 9, 16	£549		
		Aug 30 - Sep 17	£325	Sep 7 - Sep 21	£409	Aug 30 - Sep 20	£449		
		Sep 27 - Dec 15	£289	Oct 5 - Oct 19	£379	Sep 27 - Oct 18	£409		
		Dec 23	£489	Dec 27	£599	Dec 23	£699		

* Peak ferry cost included in the price



Cosy Double Rooms
See page 5 for details

Half Price Bar
See page 7 for details

Bayshore Hotel

Isle of Wight, Sandown

☎ 01983 403154
✉ bayshore@leisureplex.co.uk
📍 12-16 Pier Street, Sandown, Isle of Wight, PO36 8JX

Leisureplex HOLIDAY HOTELS Alfa **★★★★** 📶 📺 🚰 🚿 🛏

4 NIGHTS
FROM
£235
PER PERSON

The Isle of Wight has a great deal to offer with many superb beaches, mile upon mile of stunning countryside and coastal walks and all the usual modern holiday facilities in the resorts. Sandown is the island's principal resort, and offers a wealth of entertainments. Sandown Bay is the largest on the island and offers a long, safe, sandy beach framed at either end by stunning white cliffs contrasting with rich blue sea.

Dinosaur Isle is an interactive museum offering life-like dinosaur models and skeletons. Sandown's esplanades and sea wall walks stretch from Yaverland southwards through Lake to Shanklin Chine.

In a magnificent position on the seafront, across from Sandown's Pier and beach and close to the resort's shopping area. The hotel features a light and airy restaurant with views across the sea, where you will find entertainment most evenings. You will also find spectacular sea views from many of the hotel's bedrooms or the hotel sun lounge.

Additional Information

- ✓ Chargeable on street parking
- ✓ Room with a view available
- ✓ Free Wi-Fi throughout
- ✓ Lift serves all floors (Ground floor is split level and some steps are unavoidable)

Nearby

- ✓ Isle of Wight Steam Railway
- ✓ Ryde & Brading Roman Villa
- ✓ Ventnor Botanic Garden
- ✓ Carisbrooke Castle
- ✓ Shanklin Chine
- ✓ Osborne House

3 Nights Tour 4195SD		4 Nights Tour 5195SD		6 Nights Tour 197SD		7 Nights Tour 195SD		10 Nights Tour 1195SD	
Mar 28	£305	Feb 10, 17, 24	£235	Mar 2, 16	£299	Mar 24	£335	Dec 23	£1049
Dec 27	£249	Mar 10, 24	£249	Mar 24, 29	£335	Mar 28 - Apr 6	£365		
Dec 30	£399	Mar 31 - Apr 9	£259	Apr 5, 13	£345	Apr 19 - May 11	£405		
		Apr 19 - May 7	£289	Apr 27 - May 11	£375	May 17 - Aug 3	£449		
		May 24 - Sep 17	£315	May 18 - Jun 29	£395	* Jul 5	£485		
		* Jul 12, 26	£349	Jul 20 - Aug 17	£435	* Jul 12, 19, 26	£519		
		* Aug 9, 23, 27	£349	Aug 31	£375	Aug 9, 16	£519		
		Oct 4 - Nov 24	£279	Sep 28 - Oct 12	£359	* Aug 23	£485		
		Dec 23	£469	Oct 18, 19	£339	Aug 24 - Sep 14	£409		
				Dec 27	£595	Sep 20 - Oct 19	£389		
						Dec 23	£675		

* Peak ferry cost included in the price

Superior rooms
for that extra touch of luxury
See page 5 for details



Cosy Double Rooms – See page 5 for details

Royal Norfolk Hotel

Bognor Regis, West Sussex

☎ 01243 826222

✉ roynorfolk@leisureplex.co.uk

📍 The Esplanade, Bognor Regis, West Sussex, PO21 2LH



4 NIGHTS
FROM
£219
PER PERSON

Officially the sunniest town in Britain, Bognor Regis is an old-school seaside resort in West Sussex. The resort is flat and has an excellent promenade walk. Enjoy the live music from the bandstand of Hotham Park, take a short trip to Arundel Castle and Gardens, or explore the Tudor Market Cross and Norman Cathedral surrounded by a host of independent shops. The South Downs National Park is also just a stone's throw away and well worth a visit.

On the beach between Bognor Regis and Aldwick lies the wreck of a floating pontoon - part of the Mulberry Harbour which was destined to be towed across to Normandy on D-Day.

The hotel is situated in a delightfully sunny spot on the seafront with extensive lawns and superb views over the English Channel. You will find a large restaurant, relaxing bar lounge and an entertainment room with dance floor. The hotel also has an outdoor terrace, where you can soak up the sun, enjoy a drink and watch the world go by.

Additional Information

- ✓ Ground floor rooms available
- ✓ Free hotel car parking available
- ✓ Extensive gardens looking out to the sea
- ✓ Room with a view available
- ✓ Lift serves all floors
- ✓ Free Wi-Fi throughout

Nearby

- ✓ Worthing, Brighton & Portsmouth
- ✓ Arundel, Littlehampton & Chichester
- ✓ Isle of Wight

3 Nights		4 Nights		6 Nights		7 Nights		10 Nights	
Tour 4205SD		Tour 5205SD		Tour 207SD		Tour 205SD		Tour 1205SD	
Nov 7	£219	Feb 10, 17, 24	£219	Mar 16	£319	Apr 12, 13	£375	Dec 23	£1059
Dec 27	£255	Mar 3, 10, 24	£235	Apr 6	£339	Apr 26 - May 11	£409		
Dec 30	£369	Mar 31 - Apr 16	£259	Apr 20 - May 4	£375	May 24 - Jul 20	£475		
		Apr 26 - May 14	£279	May 18	£419	Aug 2 - Aug 17	£475		
		May 24 - Jun 25	£329	Jun 1 - Jun 29	£419	Aug 30 - Aug 31	£435		
		Jul 5 - Jul 23	£329	Jul 13 - Aug 10	£419	Sep 13, 14	£435		
		Aug 2 - Aug 20	£329	Aug 24	£385	Sep 27 - Oct 12	£399		
		Aug 30 - Sep 17	£299	Sep 7 - Sep 21	£385	Nov 3, 7	£399		
		Sep 27 - Dec 1	£269	Oct 5, 19	£359	Dec 1	£399		
		Dec 23	£479	Dec 27	£599	Dec 23	£699		



Cosy Double Rooms – See page 5 for details

Queens Hotel

Eastbourne, East Sussex

☎ 01323 722822

✉ queens.eastbourne@leisureplex.co.uk

📍 Marine Parade, Eastbourne, East Sussex, BN21 3DY



4 NIGHTS
FROM
£219
PER PERSON

Eastbourne is one of Britain's more elegant resorts, enjoying a glorious location on the South Coast. Sheltered by Beachy Head and the South Downs it has an excellent sunshine record, always coming in the top few of the sunshine league. It has a spacious promenade to stroll along and the world-famous Carpet Gardens line the seafront. Eastbourne has clean inviting beaches predominantly of shingle. Beachy Head has panoramic views, from Brighton in the west to Dungeness in Kent in the east. This Area of Outstanding Natural Beauty is close to the historical sites of Hastings and Battle and a short drive from lively Brighton.

A magnificent Victorian building situated in an outstanding position overlooking the pier. Outstanding views of the sea can be found from many of the hotel bedrooms. This grand building has spacious and comfortable restaurant facilities, bar and entertainment room with dance floor, where entertainment can be found most evenings.

Additional Information

- ✓ Free additional car parking
- ✓ Room with a view available
- ✓ Free Wi-Fi throughout
- ✓ Two lifts serve all floors
- ✓ Stair lift for wheelchair users on the ground floor

Nearby

- ✓ Hever Castle
- ✓ Beachy Head
- ✓ Hastings & Battle
- ✓ Brighton
- ✓ Kent & East Sussex Railway
- ✓ Sheffield Park Gardens

3 Nights		4 Nights		6 Nights		7 Nights		10 Nights	
Tour 4215SD		Tour 5215SD		Tour 217SD		Tour 215SD		Tour 1215SD	
Nov 7, 21	£239	Jan 27 - Feb 24	£219	Mar 16	£315	Apr 5, 6	£375	Dec 23	£1079
Dec 27	£265	Mar 3, 10, 24	£235	Apr 5, 6, 13	£339	Apr 19 - May 4	£429		
Dec 30	£389	Mar 31 - Apr 19	£259	Apr 19 - May 11	£375	May 17 - May 31	£485		
		Apr 23 - May 17	£289	May 17 - Jul 27	£435	Jun 1 - Jun 29	£485		
		May 21 - Jun 28	£325	Aug 3 - Aug 24	£435	Jul 12 - Jul 27	£485		
		Jul 2 - Aug 23	£325	Aug 31	£399	Aug 2 - Aug 24	£485		
		Aug 27 - Sep 24	£315	Sep 6 - Sep 28	£399	Sep 6 - Sep 21	£435		
		Oct 4 - Nov 24	£279	Oct 4 - Oct 19	£375	Oct 4, 5	£409		
		Dec 1, 8, 15	£279	Nov 8, 22	£375	Nov 3 - Nov 21	£409		
		Dec 23	£499	Dec 27	£645	Dec 23	£729		

Explore the East Coast

The East of England is home to expansive wetlands, vast sandy beaches and stylish coastal towns. Discover the famous Norfolk Broads, a stunning National Park with over 125 miles of lock free waterways which are home to some of the rarest plants and animals in the UK.

The East Coast is home to a variety of popular towns, with attraction-packed resorts such as Great Yarmouth and the charming seaside resort of Cromer. If you've never visited the beautiful East Coast of England before then prepare to be inspired!

Visit alfatravel.co.uk for further details

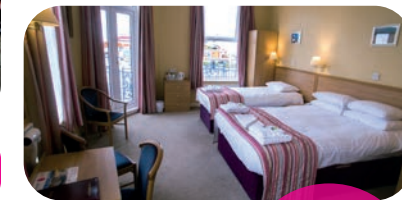


Cromer



Leisureplex Hotels in this area

- 13 New Beach Hotel - Great Yarmouth 23
- 14 Hotel de Paris - Cromer 24



Cosy Double Rooms
See page 5 for details

Half Price Bar
See page 7 for details

New Beach Hotel
Great Yarmouth, Norfolk

☎ 01493 332300
✉ newbeach@leisureplex.co.uk

Leisureplex HOLIDAY HOTELS



📍 67 Marine Parade, Great Yarmouth, Norfolk, NR30 2EJ

4 NIGHTS
FROM
£209
PER PERSON

Great Yarmouth is East Anglia's top seaside venue, whose long sandy beach stretches for miles, backed by the Marine Parade and promenade, ideal for a stroll or a ride on a horse-drawn landau.

Visitors enjoy a huge range of attractions including the Model Village, a magnificent Sea Life Centre and the Hippodrome Circus, one of the longest running permanent circuses in England. Those with an interest in history might also enjoy the preserved Row Houses, unique to Great Yarmouth.

The New Beach Hotel is in a prime position on the seafront opposite Britannia Pier. Many of the hotel bedrooms boast fantastic sea views, where you can enjoy the panoramic views of the resort and seafront.

The hotel features a comfortable sun lounge, a large restaurant and entertainment room with dance floor, where you can find entertainment on most evenings.

Additional Information

- ✓ Free on street car parking, permit required from the reception
- ✓ Room with a view available
- ✓ Free Wi-Fi throughout
- ✓ Lift serves all floors

Nearby

- ✓ Norwich, Wroxham & Caister
- ✓ Suffolk Villages
- ✓ Norfolk Broads
- ✓ Somerleyton Hall & Gardens
- ✓ Lowestoft
- ✓ Cromer

3 Nights	4 Nights	6 Nights	7 Nights	10 Nights
Tour 4260SD	Tour 5260SD	Tour 262SD	Tour 260SD	Tour 1260SD
Nov 7, 14, 21, 28 £219	Jan 27 £209	Mar 16 £289	Apr 5, 6 £335	Dec 23 £999
Dec 27 £255	Feb 3, 10, 17, 24 £209	Apr 13 £315	Apr 19, 20 £365	
Dec 30 £369	Mar 3, 10, 24 £219	Apr 20 - May 11 £335	May 3 - May 18 £365	
	Mar 31 - May 17 £259	May 25 - Jun 22 £345	May 25 - Jun 29 £389	
	May 21 - Aug 23 £289	Jul 6, 20 £345	Jul 12 - Jul 27 £389	
	Aug 27 - Sep 24 £279	Aug 3, 17 £345	Aug 9 - Aug 31 £389	
	Oct 4 - Oct 27 £259	Aug 31 £335	Sep 6 - Sep 21 £365	
	Nov 3 - Nov 24 £259	Sep 14, 28 £335	Oct 4 - Oct 19 £365	
	Dec 1 - Dec 15 £259	Oct 12 £335	Nov 3 - Dec 12 £359	
	Dec 23 £479	Dec 27 £549	Dec 23 £695	

Superior rooms
for that extra touch of luxury
See page 5 for details



Cosy Double Rooms – See page 5 for details



Hotel de Paris

Cromer, Norfolk

☎ 01263 513141

✉ deparis@leisureplex.co.uk

📍 High Street, Cromer, Norfolk, NR27 9HG

Leisureplex
HOLIDAY HOTELS



2 NIGHTS
FROM
£139
PER PERSON

Cromer was once a small fishing village which has now grown into a bustling holiday resort, with superb sunshine records. This attractive and small resort is full of character with its narrow twisting streets in the town centre and lively seafront promenade behind the sandy beach. The famous Pier Pavilion puts on a unique summer show. Cromer is set amidst the pleasant countryside of North Norfolk with its leafy country lanes and villages with their flint cottages. Discover the famous Norfolk Broads, a stunning National Park with over 125 miles of lock free waterways which are home to some of the rarest plants and animals in the UK.

Built in 1820, the Hotel de Paris is a stunning Regency building, occupying the finest position on Cromer seafront and boasting stunning views of the resort and Cromer pier. The hotel is steeped with character and period features with a warm and welcoming bar and lounge area and restaurant with dance floor, where you will find entertainment most evenings.

Additional Information

- ✓ Limited free hotel parking, public car parks available nearby
- ✓ Lift serves all floors
- ✓ Free Wi-Fi throughout
- ✓ Room with a view available

Nearby

- ✓ Norwich
- ✓ Blickling Hall
- ✓ Bure Valley Railway
- ✓ Thursford Collection
- ✓ Sheringham
- ✓ Sandringham Royal Estate

2 Nights		4 Nights		6 Nights		7 Nights		10 Nights	
Tour 3265SD		Tour 5265SD		Tour 267SD		Tour 265SD		Tour 1265SD	
Apr 4	£139	Jan 27 - Feb 24	£219	Mar 23, 31	£335	Apr 12, 13	£375	Dec 23	£1019
		Mar 3, 10, 17	£249	Apr 6	£345	Apr 26 - May 11	£425		
		Apr 12, 16	£259	Apr 20 - May 4	£379	May 24 - Jun 28	£459		
		Apr 26 - May 14	£279	May 18	£409	Jul 5 - Jul 27	£459		
		May 24 - Aug 23	£315	Jun 1, 8, 22	£409	Aug 2 - Aug 17	£459		
		Aug 27 - Sep 17	£299	Jul 13, 27	£409	Aug 23 - Sep 14	£425		
		Sep 27 - Oct 27	£269	Aug 17	£409	Sep 27, 28	£399		
		Nov 3 - Nov 24	£279	Sep 7	£375	Oct 11, 12	£399		
		Dec 1, 8	£279	Sep 21 - Oct 19	£359	Nov 3 - Dec 12	£399		
		Dec 23	£479	Dec 27	£589	Dec 23	£699		

Explore Yorkshire

Yorkshire is where England's true beauty shines, from historical attractions and UNESCO World Heritage Sites to stunning countryside. Those that know this region appreciate the wealth of beauty unspoilt by large numbers of visitors. Let's not forget the maritime history of Scarborough and Whitby, which have been the heart of these towns for centuries. The real beauty of Yorkshire is its secret and it's there waiting to be discovered.

No Single Room Supplements

at Leisureplex Hotels in 2025



Leisureplex Hotels in this area

- 15 Cumberland Hotel - Scarborough 26
- 16 Monarch Hotel - Bridlington 27

Superior rooms
for that extra touch of luxury
See page 5 for details



Cosy Double Rooms – See page 5 for details

Cumberland Hotel

Scarborough

☎ 01723 361826

✉ cumberland@leisureplex.co.uk

📍 Belmont Road, Scarborough, North
Yorkshire, YO11 2AB

Leisureplex
HOLIDAY HOTELS



4 NIGHTS
FROM
£219
PER PERSON

Holidaymakers have been visiting Scarborough for hundreds of years. As Britain's first seaside resort, a holiday to Scarborough offers something for everyone with sandy beaches, stunning views and many attractions.

Scarborough's headland which divides its two bays reveals an impressive medieval castle with Viking heritage and Roman remains in the grounds. The harbour is home to many fishing boats and on the South bay promenade you will find many traditional seaside pursuits. Why not visit Peasholm Park with its Japanese gardens and boating lake, or take a trip on one of the many local boats, from which you can enjoy panoramic views of the resort, or enjoy entertainment at the famous open air theatre.

Situated on South Cliff and boasting a fantastic view over the resort from the restaurant and many of the bedrooms. The hotel features a large modern restaurant, a cosy quiet lounge and a large entertainment room with dance floor, where entertainment can be found most evenings.

Additional Information

- ✓ Free on street parking, permit required from reception
- ✓ Room with a view available
- ✓ Free Wi-Fi throughout
- ✓ Lift serves all floors

Nearby

- ✓ Whitby & Goathland
- ✓ Beverley
- ✓ Castle Howard
- ✓ North Yorkshire Moors Railway
- ✓ York
- ✓ Bridlington

3 Nights Tour 4275SD		4 Nights Tour 5275SD		6 Nights Tour 277SD		7 Nights Tour 275SD		10 Nights Tour 1275SD	
Mar 28	£219	Jan 27 - Feb 24	£219	Mar 16	£319	Mar 24 - Apr 27	£425	Dec 23	£1079
Nov 7, 21, 28	£229	Mar 3, 10, 24	£229	Apr 6	£329	May 10, 11	£425		
Dec 27	£265	Mar 31 - Apr 16	£259	Apr 20 - May 4	£379	May 24, 25	£459		
Dec 30	£399	Apr 26 - May 14	£279	May 18	£409	Jun 7 - Jun 22	£459		
		May 24 - Aug 20	£315	Jun 1 - Jun 29	£409	Jul 5 - Jul 20	£459		
		Aug 30 - Sep 17	£299	Jul 13 - Jul 27	£409	Aug 2 - Aug 17	£459		
		Sep 27 - Oct 27	£269	Aug 10	£409	Aug 30 - Sep 14	£419		
		Nov 3 - Nov 24	£279	Aug 24 - Sep 7	£379	Sep 27 - Oct 19	£389		
		Dec 1	£279	Sep 21 - Oct 12	£355	Nov 3 - Nov 28	£399		
		Dec 23	£499	Dec 27	£615	Dec 23	£719		

Superior rooms
for that extra touch of luxury
See page 5 for details



Cosy Double Rooms – See page 5 for details

Monarch Hotel

Bridlington, Yorkshire

☎ 01262 674447

✉ monarch@leisureplex.co.uk

📍 28 South Marine Drive, Bridlington,
North East, YO15 3JJ

Leisureplex
HOLIDAY HOTELS



2 NIGHTS
FROM
£149
PER PERSON

Bridlington has an historic old town, long promenade, sandy beach and cliff top walks with views of the trawler port. Packed with attractive antique shops and restaurants, the Old Town was the setting for 2016's Dad's Army film.

The delightful mix of brick and stone buildings, colourful shop fronts, popular cafés and individual shops provide a relaxing environment for shopping or strolling. Entertainments and art galleries are housed in the refurbished Spa Centre on the seafront.

The Monarch Hotel offers breathtaking panoramic sea views and is sure to provide the perfect base for exploring Bridlington and the surrounding areas. The hotel features a quiet lounge, restaurant and bar area on the first floor, as well as a good size dance floor where entertainment is regularly featured. The hotel has undergone a million pound refurbishment since joining the Alfa Leisureplex Group in 2019.

Additional Information

- ✓ Free on street car parking
- ✓ Room with a view available
- ✓ Free Wi-Fi throughout
- ✓ Lift serves all floors except the 6th

Nearby

- ✓ Flamborough Head
- ✓ Scarborough
- ✓ York
- ✓ Castle Howard
- ✓ Beverley
- ✓ Burton Agnes Hall

2 Nights Tour 3279SD		4 Nights Tour 5279SD		6 Nights Tour 279SD		7 Nights Tour 280SD		10 Nights Tour 1280SD	
Mar 14, 22	£149	Feb 3, 10, 17, 24	£219	Mar 16	£319	Feb 17 - Mar 24	£345	Dec 23	£1029
		Mar 3, 10, 24	£235	Apr 13	£329	Mar 28 - Apr 6	£375		
		Mar 31 - Apr 19	£259	Apr 27 - May 11	£375	Apr 19 - May 18	£425		
		Apr 23 - May 17	£289	May 25 - Jun 22	£409	May 31 - Jun 29	£459		
		May 21 - Jun 28	£309	Jul 6, 20	£409	Jul 12 - Jul 27	£459		
		Jul 2 - Jul 30	£309	Aug 3, 17	£409	Aug 9 - Aug 24	£459		
		Aug 9 - Aug 23	£309	Aug 31, Sep 14	£379	Sep 6 - Sep 21	£425		
		Aug 27 - Sep 24	£299	Sep 28	£359	Oct 4 - Oct 31	£389		
		Oct 4 - Dec 1	£269	Oct 12	£359	Nov 10 - Nov 28	£389		
		Dec 23	£479	Dec 27	£589	Dec 23	£689		

Explore the North West

There are so many enchanting places to visit in the North West, with its idyllic countryside, iconic seaside resorts and historic towns; this is one of the most exciting corners of the country. Experience the revolutionary cities of Manchester and Liverpool, with their impressive musical legacies, art galleries and theatres, together with magnificent buildings. Just along the coast from these major cities you will find a string of vibrant seaside resorts such as Blackpool, Morecambe, Southport and Lytham St Annes. The serenity of the Lake District, with its stunning scenery and varied landscapes provides the perfect escape from the hustle and bustle. There is something to charm everyone in the North West.

Visit alfatravel.co.uk for further details



Blackpool

Leisureplex Hotels in this area

17 Queens Hotel - Blackpool

29

Superior rooms
for that extra touch of luxury
See page 5 for details



Cosy Double Rooms
See page 5 for details

Half Price Bar
See page 7 for details



3 NIGHTS
FROM
£195
PER PERSON

Queens Hotel
Blackpool, Lancashire

☎ 01253 336980
✉ queens.blackpool@leisureplex.co.uk
📍 467 - 469 South Promenade, Blackpool, Lancashire, FY4 1AY

Leisureplex HOLIDAY HOTELS

Few resorts anywhere in the world can rival the popularity of Blackpool - Britain's Capital of Fun! The world famous Tower, three piers, miles of golden sands, the spectacular Pleasure Beach, a Sealife Centre, Madame Tussaud's Waxworks, a Zoo Park, an Art Gallery - Blackpool has them all. Make sure to save some of your energy for the evening and sample the terrific summer shows, lively bars and pubs, for it is at night that Blackpool really stands out as the most exciting of all Britain's resorts.

With fantastic views of the Irish Sea, the Queens Hotel is located between Blackpool's south and central piers. The hotel features a modern restaurant, bar, lounge and a sun lounge. Immerse yourself in Blackpool's theatrical history, in the hotel's unique Theatre Bar, featuring a dance floor and entertainment on most evenings. For a complete contrast to the sheer energy of Blackpool, just a short drive away is some of the most serene scenery in Britain including the Ribble Valley and the Lake District.

- Additional Information**
- ✓ Free hotel car parking available
 - ✓ Room with a view available
 - ✓ Free Wi-Fi throughout
 - ✓ 2 lifts serve all floors (several steps to some rooms)

- Nearby**
- ✓ Ribble Valley & Pendle Witch Country
 - ✓ Fleetwood, Lytham St. Annes, Southport & Trough of Bowland
 - ✓ Lancaster, Liverpool & Manchester
 - ✓ Lake District & Yorkshire Dales

3 Nights		4 Nights		6 Nights		7 Nights		10 Nights	
Tour 4305SD		Tour 5305SD		Tour 307SD		Tour 305SD		Tour 1305SD	
Mar 28	£195	Jan 27 - Feb 24	£209	Mar 15, Mar 29	£279	Mar 10 - Mar 28	£355	Dec 23	£1099
Apr 4	£229	Mar 3, 10, 17, 24	£229	Apr 5 - Apr 20	£325	Apr 5, 6	£355		
Oct 3, 10, 17, 31	£245	Mar 31 - Apr 19	£245	Apr 27 - May 18	£349	Apr 19, 20	£395		
Nov 7, 21	£245	Apr 23 - May 17	£275	May 25, 31	£399	May 3 - May 18	£395		
Dec 27	£279	May 21 - Jul 30	£295	Jun 1 - 29	£399	May 31 - Jun 29	£409		
Dec 30	£405	Aug 9 - Sep 29	£295	Jul 6 - Jul 27	£399	Jul 12 - Jul 27	£409		
		Oct 4 - Oct 27	£295	Aug 3 - Aug 31	£399	Aug 9 - Sep 21	£409		
		Nov 3 - Dec 8	£265	Sep 14, 28	£399	Oct 4 - Oct 19	£409		
		Dec 15	£265	Oct 12	£399	Nov 3 - Nov 21	£375		
		Dec 23	£509	Dec 27	£645	Dec 23	£729		

Explore Wales

A colourful myriad of rugged coastline, mountainous National Parks and Celtic culture, Wales has everything you could wish for in a holiday. The phrase 'good things come in small packages' may be a cliché, but in the case of Wales it's absolutely true.

No Single Room Supplements

at Leisureplex Hotels in 2025



Llandudno



Leisureplex Hotels in this area

- 18 Hydro Hotel - Llandudno 31
- 19 George IV Hotel - Criccieth 32
- 20 Cliffe Norton Hotel - Tenby 33
- 21 Seabank Hotel - Porthcawl 34

Superior rooms
for that extra touch of luxury
See page 5 for details



Cosy Double Rooms - See page 5 for details

Hydro Hotel

Llandudno, Gwynedd



01492 870101

hydro@leisureplex.co.uk

Nevill Crescent, Llandudno, Gwynedd, LL30 1AS

3 NIGHTS
FROM
£199
PER PERSON

Lying on a peninsula between the Great Orme and Little Orme Heads, Llandudno has two great beaches. The shingly North Shore is the busier of the two with its Victorian Pier, boat trips, donkey rides and much more. The sandy West shore is quieter with miles of sands and panoramic views of the Snowdonia mountain range. A Victorian tramway and cable car offer a route to the summit of the Great Orme.

The Hydro Hotel is splendidly situated in Llandudno, with spectacular views over the bay. The hotel features a magnificent sun lounge, restaurant, games room and large entertainment room with dance floor, where you will find entertainment most evenings. Many of the hotel's rooms have spectacular views of the bay or over the town to the Welsh mountains.

Just a 15 minute drive away is the nearby town of Conwy where you will find stunning scenery, the smallest house in Britain, the Bodnant Gardens, Conwy Mountain and of course the iconic Conwy Castle and Walls.

Additional Information

- ✓ Some ground floor rooms
- ✓ Free hotel car parking available
- ✓ Room with a view available
- ✓ Free Wi-Fi throughout
- ✓ Lift serves all floors (split level floors means some steps to most rooms)

Nearby

- ✓ Llangollen & Betws-y-Coed
- ✓ Conwy Castle
- ✓ Bodnant Garden
- ✓ Snowdon Mountain Railway
- ✓ Caernarfon & Anglesey

3 Nights		4 Nights		6 Nights		7 Nights		10 Nights	
Tour 4350SD		Tour 5350SD		Tour 352SD		Tour 350SD		Tour 1350SD	
Feb 28	£199	Jan 27 - Feb 24	£219	Mar 16	£319	Feb 3 - Mar 16	£359	Dec 23	£1129
Mar 7	£209	Mar 3, 10, 24	£235	Apr 6	£339	Mar 24 - Apr 13	£375		
Nov 7, 21	£229	Mar 31 - Apr 16	£259	Apr 20 - May 4	£379	Apr 26 - May 11	£409		
Dec 27	£279	Apr 26 - May 14	£289	May 18	£409	May 24 - Jun 22	£459		
Dec 30	£399	May 24 - Jun 25	£319	Jun 1 - Jun 29	£409	Jul 5 - Jul 20	£459		
		Jul 5 - Jul 23	£319	Jul 13, 27	£409	Aug 2 - Aug 17	£459		
		Aug 2 - Aug 20	£319	Aug 10, 24	£409	Aug 30, 31	£409		
		Aug 30 - Sep 17	£299	Sep 7	£379	Sep 13 - Sep 28	£409		
		Sep 27 - Dec 15	£279	Sep 21 - Oct 19	£359	Oct 11 - Nov 21	£389		
		Dec 23	£499	Dec 27	£645	Dec 23	£739		

Superior rooms
for that extra touch of luxury
See page 5 for details



Cosy Double Rooms – See page 5 for details

George IV Hotel
Criccieth, Gwynedd

☎ 01766 522168

✉ georgeiv@leisureplex.co.uk

📍 23-25 High Street, Criccieth,
Gwynedd, LL52 0BS

Leisureplex
HOLIDAY HOTELS



4 NIGHTS
FROM
£229
PER PERSON

Criccieth lies on the south coast of the Llyn Peninsula with splendid views over Cardigan Bay. The medieval castle dominates the town. The castle headland divides the seafront into two with a pebbly bay to the west and a sheltered, mainly sandy bay to the east. This area is ideal for walking, from the gentle rolling hills of the Llyn Peninsula in the west to the soaring majesty of Snowdonia in the east, with delightful gardens and castles at every turn. Criccieth railway station provides a great way to visit Porthmadog or Pwllheli.

A delightful and unique hotel, situated on Criccieth's High Street. From many of the hotel bedrooms, you can enjoy magnificent views over Cardigan Bay and Criccieth Castle or over to the Welsh mountains. The hotel is just a short stroll away from the beach, resorts shops and rocky headland. The hotel features a lounge bar, restaurant, quiet lounge and entertainment room.

Additional Information

- ✓ Room with a view available
- ✓ Free Wi-Fi throughout
- ✓ Lift serves all floors

Nearby

- ✓ Snowdonia National Park
- ✓ Portmeirion Village
- ✓ Harlech
- ✓ Porthmadog
- ✓ Llechwedd Slate Caverns
- ✓ Ffestiniog Railway
- ✓ Llanberis Lake Railway

3 Nights		4 Nights		6 Nights		7 Nights		10 Nights	
Tour 4365SD		Tour 5365SD		Tour 367SD		Tour 365SD		Tour 1365SD	
Nov 7, 21	£229	Mar 3, 10, 17, 24	£229	Apr 5 - Apr 20	£345	Mar 17, 21	£315	Dec 23	£1029
Dec 27	£255	Mar 31 - Apr 19	£259	Apr 27 - May 18	£379	Apr 5, 6	£375		
Dec 30	£359	Apr 23 - May 17	£279	May 25 - Jun 22	£399	Apr 19, 20	£409		
		May 21 - Jun 28	£309	Jul 6, Jul 20	£399	May 3, 4	£409		
		Jul 2 - Jul 16	£309	Aug 10, Aug 17	£399	May 17 - 31	£445		
		Aug 2 - Aug 23	£309	Aug 31 - Sep 28	£359	Jun 1 - Aug 3	£445		
		Aug 27 - Sep 24	£289	Oct 4 - Oct 19	£359	Aug 23, 24	£409		
		Oct 4 - Nov 24	£269	Dec 27	£579	Sep 6 - Sep 22	£409		
		Dec 1	£269			Oct 4 - Nov 21	£389		
		Dec 23	£479			Dec 23	£699		

Superior rooms
for that extra touch of luxury
See page 5 for details



Cosy Double Rooms – See page 5 for details

Cliffe Norton Hotel
Tenby, Pembrokeshire

☎ 01834 842333

✉ cliffe.norton@leisureplex.co.uk

📍 The Norton, Tenby, South Pembrokeshire,
SA70 8AA

Leisureplex
HOLIDAY HOTELS



2 NIGHTS
FROM
£165
PER PERSON

Tenby is a uniquely attractive resort. Its pastel coloured buildings, narrow streets, fortified walls and the quality of the light from its shimmering bays give it an atmosphere which is reminiscent of the Mediterranean, whose history is much richer than most seaside resorts. The fifteenth century Tudor Merchants House gives an insight into life when it was a busy trading port.

Tenby has four magnificent sandy beaches and a delightful harbour which is always busy with pleasure crafts and the regular ferries which serve the nearby Caldey Island monastery, a "must" to explore during your stay.

Occupying a prime position on the North Beach, in the stunning resort of Tenby, the hotel boasts spectacular views across the bay from many of the hotel's bedrooms and restaurant and is just a short stroll away from the resorts town centre. The hotel features a restaurant, quiet lounge and bar with dance floor, where you will find entertainment most evenings.

Additional Information

- ✓ Local car parking is available
- ✓ Restaurant is on a split level from the reception and is accessible via the stairs or a lift
- ✓ Sea view rooms available
- ✓ Lift serves all floors
- ✓ Free Wi-Fi throughout

Nearby

- ✓ Haverfordwest, Laugharne, Pembroke, St. David's, Narberth & Carmarthen
- ✓ Caldey Island boat trips
- ✓ Wales Coast Path

2 Nights		4 Nights		6 Nights		7 Nights		10 Nights	
Tour 3380SD		Tour 5380SD		Tour 382SD		Tour 380SD		Tour 1380SD	
Mar 22	£165	Jan 27 - Feb 24	£235	Mar 16	£329	Apr 5, 6	£385	Dec 23	£1129
		Mar 3, 10, 24	£259	Apr 13	£359	Apr 19 - May 4	£435		
		Mar 31 - Apr 19	£269	Apr 27 - May 11	£425	May 17 - Jul 27	£485		
		Apr 23 - May 17	£299	May 25 - Jun 29	£435	Aug 2, 9, 16, 17	£485		
		May 21 - Aug 20	£339	Jul 13	£435	Aug 30, 31	£455		
		Aug 30 - Sep 24	£315	Jul 27 - Aug 3	£435	Sep 13	£455		
		Oct 4 - Oct 27	£269	Aug 24 - Sep 7	£399	Sep 20 - Nov 7	£429		
		Nov 3 - Nov 24	£289	Sep 28	£389	Dec 23	£729		
		Dec 1	£289	Oct 12	£389				
		Dec 23	£499	Dec 27	£639				



Cosy Double Rooms
See page 5 for details

Half Price Bar
See page 7 for details

☎ 01656 782261
✉ seabank@leisureplex.co.uk
📍 West Drive, The Esplanade, Porthcawl, Glamorgan, CF36 3LU

4 NIGHTS
FROM
£219
PER PERSON

Seabank Hotel
Porthcawl, Glamorgan

Leisureplex HOLIDAY HOTELS Alfa **★★★★** 📶 🎵 📺 🛎

Located between Swansea and Cardiff, Porthcawl was originally a port for the iron and steel industries and is still home to the oldest maritime warehouse in Wales and an attractive harbour. It developed as a resort after the Great War and the splendid Grand Pavilion dates from 1932.

It is famous for its many golf courses including the world famous Royal Porthcawl. Coney Beach is a fairground with a variety of rides and amusements which was named after the famous New York venue. Porthcawl has several beaches and some lovely countryside walks.

The Seabank is Porthcawl's most iconic building, situated on the headland with fantastic sea views across the resort. There are spectacular panoramic views of the Bristol Channel and coast from the bar and many bedrooms. The hotel features a large modern restaurant, quiet lounge and bar, with dance floor, where you will find entertainment most evenings.

- Additional Information**
- ✓ Free hotel car parking available
 - ✓ Ground floor rooms available
 - ✓ Room with a view available
 - ✓ Free Wi-Fi throughout
 - ✓ Lift serves most rooms

- Nearby**
- ✓ Swansea
 - ✓ Barry Island
 - ✓ St. Fagan's National Museum of History
 - ✓ Royal Mint Experience
 - ✓ Cardiff
 - ✓ Brecon Beacons

3 Nights		4 Nights		6 Nights		7 Nights		10 Nights	
Tour 4385SD		Tour 5385SD		Tour 387SD		Tour 385SD		Tour 1385SD	
Dec 27	£255	Feb 3, 10, 17, 24	£219	Mar 2, 16, 23	£319	Mar 10, 16, 22	£359	Dec 23	£1065
Dec 30	£385	Mar 10	£235	Apr 6	£339	Apr 12, 13	£375		
		Mar 31 - Apr 16	£259	Apr 20 - May 4	£369	Apr 26 - May 11	£425		
		Apr 26 - May 14	£279	May 18	£395	May 24, 25	£445		
		May 24 - Aug 20	£309	Jun 1, 15, 29	£395	Jun 7 - Jun 22	£445		
		Aug 30	£289	Jul 1 - Aug 10	£395	Jul 5 - Jul 20	£445		
		Sep 3 - Sep 22	£289	Aug 24	£359	Aug 2 - Aug 17	£445		
		Sep 27 - Nov 24	£269	Sep 7, 21	£359	Aug 30 - Sep 14	£425		
		Dec 1	£269	Oct 5, 19	£359	Oct 11, 12	£399		
		Dec 23	£479	Dec 27	£615	Dec 23	£699		

Explore Scotland

A land of magical glens and picturesque lochs with stunning mountain views, when it comes to exploring Scotland, it's as much about the journey as the destination. From the shimmering waters of Loch Lomond, to the unspoilt natural beauty of the Highlands and everything in between, a holiday to Scotland is sure to leave you with memories to last a lifetime.

Visit **alfatravel.co.uk** for further details



📍 Fort William

Leisureplex Hotels in this area

- 22 Selborne Hotel - Dunoon 36
- 23 Croit Anna Hotel - Fort William 37
- 24 Waverley Castle Hotel - Melrose 38



Cosy Double Rooms
See page 5 for details

Half Price Bar
See page 7 for details



4 NIGHTS
FROM
£219
PER PERSON

Selborne Hotel

Dunoon, Argyll

☎ 01369 702761

✉ selborne@leisureplex.co.uk

📍 Clyde Street, Dunoon,
Argyll, PA23 7HT



Dunoon is splendidly situated on the western shores of the Firth of Clyde. A traditional seaside resort, Dunoon boasts lovely gardens, the remains of a castle, a four mile promenade and a 19th Century pier with panoramic views across the Clyde. Pleasure cruises run throughout the summer months sailing to destinations ranging from Loch Goil to Largs and Rothesay. You may even catch the last sea-going paddle steamer in the world, the Waverley.

In a superb position on the banks of the Clyde, the hotel boasts spectacular views across the hotel's gardens that reach down to the promenade and water's edge. All the public rooms and many of the bedrooms offer uninterrupted views of the Clyde. Ground floor areas include a bar lounge with dance floor, quiet lounge and games room. The hotel has an outdoor terrace, where you can enjoy the view. Entertainment is provided most evenings in the bar lounge.

Additional Information

- ✓ Free hotel car parking available
- ✓ Room with a view available
- ✓ Free Wi-Fi throughout
- ✓ Lift serves most rooms

Nearby

- ✓ Inveraray Castle
- ✓ Helensburgh
- ✓ Loch Lomond
- ✓ Isle of Bute
- ✓ Oban
- ✓ Glasgow
- ✓ Luss

3 Nights Tour 4410SD		4 Nights Tour 5410SD		6 Nights Tour 412SD		7 Nights Tour 410SD		10 Nights Tour 1410SD	
Jun 20	£259	Feb 10, 17, 24	£219	Mar 2, 16	£299	Apr 12, 13	£355	Dec 23	£1065
Aug 1, 22	£259	Mar 10, 24	£229	Apr 6, 12, 13	£325	Apr 26 - May 11	£379		
Oct 31	£235	Mar 31 - Apr 16	£259	Apr 20 - May 11	£345	May 24, 25	£409		
Nov 21	£235	Apr 26 - May 14	£269	May 18 - May 25	£369	Jun 7 - Jun 29	£409		
Dec 27	£255	May 24 - Aug 20	£289	Jun 1 - Jun 29	£369	Jul 12 - Jul 27	£409		
Dec 30	£399	Aug 30 - Sep 17	£279	Jul 6 - Jul 27	£369	Aug 2 - Aug 17	£409		
		Sep 27	£259	Aug 2 - Aug 17	£369	Aug 30 - Sep 28	£379		
		Oct 1 - Oct 27	£259	Aug 24 - Sep 28	£345	Oct 4, 11, 12	£359		
		Nov 3 - Nov 24	£269	Oct 5 - Oct 19	£335	Nov 17, 21	£349		
		Dec 23	£479	Dec 27	£649	Dec 23	£699		

Superior rooms
for that extra touch of luxury
See page 5 for details



Cosy Double Rooms
See page 5 for details

Half Price Bar
See page 7 for details



2 NIGHTS
FROM
£139
PER PERSON

Croit Anna Hotel

Fort William, Inverness-shire

☎ 01397 702268

✉ croitanna@leisureplex.co.uk

📍 Achintore Road, Fort William,
Inverness-shire, PH33 6RR



Fort William, the "Outdoor Capital of the UK" is not only an important tourist centre but also a splendid location from which to explore the magnificent Western Highlands. It is situated at the southern end of the Great Glen, on the shores of the crystal clear Loch Linnhe beneath Britain's highest mountain, Ben Nevis. Take a trip on the world famous Jacobite Steam Train and enjoy the stunning scenery of the West Highland Line. Inverness, Oban, Skye and Speyside all make superb full days out and of course, breathtaking Glencoe. In an idyllic position on the shores of Loch Linnhe, there are spectacular views across the Loch from the hotel's restaurant, bar and lounge and from many of the bedrooms. The hotel provides an excellent base in which to relax and features a large restaurant, cosy quiet lounge and a bar with dance floor, where entertainment can be found most evenings. The outdoor terrace provides a great location to enjoy a drink, whilst admiring the stunning scenery.

Additional Information

- ✓ Free hotel car parking available
- ✓ Room with a view available
- ✓ Free Wi-Fi throughout
- ✓ No lift but ground floor rooms are available

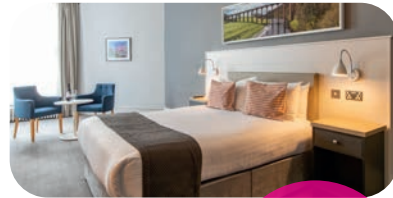
Nearby

- ✓ Loch Ness, Isle of Skye & Inverness
- ✓ West Highland Line
- ✓ Nevis Range Gondolas
- ✓ Glencoe Visitor Centre
- ✓ Speyside, Oban & Mallaig

3 Nights Tour 4430SD		4 Nights Tour 5430SD		6 Nights Tour 432SD		7 Nights Tour 430SD		10 Nights Tour 1430SD	
Apr 25	£219	Mar 3, 10, 17, 24	£229	Mar 2, 16	£299	Apr 12, 13	£369	Dec 23	£1029
May 9	£239	Mar 31 - Apr 23	£259	Apr 13	£329	Apr 19 - Apr 27	£369		
Jun 20, 27	£259	Apr 28 - May 14	£279	May 4	£359	May 3 - May 19	£399		
Jul 18, 25	£259	May 19 - May 28	£299	May 18 - Jun 22	£385	May 24 - May 31	£425		
Aug 1, 15, 22	£259	Jun 7 - Jun 28	£299	Jul 6, 20	£385	Jun 1 - Jun 29	£425		
Sep 5, 12	£245	Jul 2 - Aug 25	£299	Aug 3, 23	£385	Jul 5 - Jul 27	£425		
Sep 26	£215	Aug 30 - Sep 17	£289	Sep 7	£359	Aug 2 - Aug 24	£425		
Nov 14	£215	Sep 27 - Oct 27	£259	Sep 21	£349	Aug 30 - Sep 21	£409	Apr 11, 18	£139
Dec 27	£255	Nov 10 - Dec 1	£269	Oct 5, 19	£349	Sep 27 - Oct 18	£379	May 2	£149
Dec 30	£349	Dec 23	£459	Dec 27	£559	Dec 23	£669	Sep 26	£149

2 Nights
Tour 3430SD

Superior rooms
for that extra touch of luxury
See page 5 for details



Cosy Double Rooms
See page 5 for details

Half Price Bar
See page 7 for details

Waverley Castle Hotel

Melrose, Scottish Borders

☎ 01896 822244

✉ waverleycastle@leisureplex.co.uk

📍 Waverley Road, Melrose,
TD6 9AA



4 NIGHTS
FROM
£219
PER PERSON

The picturesque town of Melrose is located halfway between the Northumberland National Park and Edinburgh near to the triple peaks of the Eildon Hills, one of the Scottish Borders' most distinctive landmarks. It is the perfect place to enjoy the transition from England to Scotland and take in the breathtaking scenery and hospitality. There's plenty to explore in the area, from charming local towns and villages to historic houses, castles and abbeys plus whisky tours, distilleries and gardens. Located just a mile from the centre of the beautiful town of Melrose, the hotel is set in five acres of parkland and a 4-minute walk from the River Tweed, offering the perfect base to explore its incredible surroundings which include Edinburgh and the Northumbrian coastline. This stately looking hotel provides stylish guest spaces with a choice of relaxing lounge and bar areas, chic dining room and beautiful ballroom. The Waverley Castle Hotel is the ideal place to unwind, rejuvenate and explore a historic and fascinating area of Scotland.

Additional Information

- ✓ Free parking is available at the hotel
- ✓ Ground floor rooms available
- ✓ Free Wi-Fi in public areas
- ✓ Lift serves all floors

Nearby

- ✓ Melrose Abbey
- ✓ Edinburgh
- ✓ Northumberland National Park
- ✓ Abbotsford House
- ✓ Floors Castle
- ✓ Harmony Gardens
- ✓ Rosslyn Chapel

3 Nights		4 Nights		6 Nights		7 Nights		10 Nights	
Tour 4440SD		Tour 5440SD		Tour 443SD		Tour 440SD		Tour 1440SD	
Dec 27	£255	Jan 27 - Feb 24	£219	Jan 27 - Feb 24	£289	Feb 24	£329	Dec 23	£1015
Dec 30	£379	Mar 3, 10	£229	Mar 10, 16, 23	£309	Apr 12, 13	£359		
		Mar 31 - Apr 12	£259	Apr 6	£309	Apr 26 - May 11	£379		
		Apr 16 - May 14	£279	Apr 20	£329	May 24, 25	£409		
		May 24 - Jun 25	£309	May 4, 18	£379	Jun 7 - Jun 22	£429		
		Jul 5 - Jul 23	£309	Jun 1 - Jul 27	£399	Jul 5 - Jul 20	£429		
		Aug 2 - Aug 20	£309	Aug 10 - Aug 24	£399	Aug 30, 31	£409		
		Aug 30 - Sep 17	£289	Sep 7, 21	£359	Sep 13, 14	£409		
		Sep 27 - Dec 8	£269	Oct 5 - Oct 25	£335	Sep 27 - Nov 21	£389		
		Dec 23	£479	Dec 27	£599	Dec 23	£699		



For more details about our
Self Drive Holidays
visit alfatravel.co.uk

Holiday Supplements

All of our Leisureplex Hotels are in superb locations and are perfectly based to ensure you make the most of the region you're visiting. From your greeting at reception, to your waiter served meals, our helpful Employee Owners will be on hand to make your stay one to remember.

Our en-suite bedrooms come with comfy beds for a great nights sleep, tea and coffee making facilities, flat screen TV with Freeview, radio and hairdryer.

For more details call **01257 248042**

Prices are per person. During special events, festivals, conferences and exhibitions certain prices may not be available. All prices are subject to availability.

Dates	Night Range & Prices					
	2 nts	3 nts	4 nts	6 nts	7 nts	10 nts
Room with a view (includes Sea, Castle and Loch Views)						
Jan - Apr	£20	£25	£25	£35	£35	-
May - Sep	£25	£35	£35	£45	£45	-
Oct - Dec	-	£25	£25	£35	£35	£60
Superior Room						
Jan - Dec	£20	£30	£40	£60	£70	£100
Cosy Double						
Jan - Dec	£30	£45	£60	£90	£105	£150

Join one of our Coach holidays at the hotel

Do you prefer to make your own way to your chosen hotel but would still like to join one of our coaches on excursion days?

By choosing to join one of our coach holidays at the hotel, you have the freedom and comfort of travelling in your own car but also have the added benefit of being able to relax and enjoy the view on one of our fabulous included excursions which are part of our extensive range of coach holidays.

If this sounds like the perfect option for you then why not request one of our FREE Alfa Travel holiday brochures?

Call **01257 248042** to request your copy today, or go online at alfatravel.co.uk





Trustpilot

Alfa fantastic as always!

- M Townsend



Great Yarmouth



Three Easy ways to book with Alfa Travel



Call our friendly Reservations Team on **01257 248042** or email us on **reservations@alfatravel.co.uk**

Our offices are open:
Mon-Fri: 8.30am - 6.30pm, Sat: 9am - 5pm,
Sundays & Bank Holidays: 10am - 4pm.



Book Online at **alfatravel.co.uk**

The easiest way to book your holiday is online. It is totally secure, you can pay online using a debit or credit card and you will receive an instant booking confirmation.



Visit an **approved Travel Agent**

Visit the Travel Agent who supplied your brochure or call us to find the location of your nearest appointed Travel Agent. There you will find friendly advisors who will be able to guide you through your booking and give you valuable feedback from other clients who have used Alfa Travel.



Sign up for our email newsletter to keep up to date with all the latest news and offers!

Car Parking Facilities

Many of our Self Drive Hotel Breaks include **free parking**, however please check the details for your chosen hotel for full details and information.

Ferries

Isle of Wight and Dunoon holidays include ferry tickets in the holiday cost.

Please note the Isle of Wight off peak ferry crossing is from Portsmouth to Fishbourne. If you would like to take your off peak ferry from Lymington to Yarmouth just let us know when booking your break.

Insurance

Insurance for Self Drive tours is available, please call reservations on **01257 248042** for more details.

Terms and Conditions

Bookings are confirmed on receipt of a deposit of £50 per person. There is no charge for using a debit or credit card. The following scale of cancellation charges shall apply to cancellation by the customer;

Period before departure in which you notify us	Coach holidays and self drive
More than 43 days prior to departure	Loss of the non-refundable deposit paid
29 to 42 days prior to departure	40%
15 to 28 days prior to departure	55%
8 to 14 days prior to departure	75%
Less than 8 days prior to departure	100%



The UK's only **Employee Owned** Travel Group

Find us on